

Some information on this page is only available in Dutch

## SABIN GAREA

### WEBSITES

[www.sabingarea.com](http://www.sabingarea.com)

### EDUCATION

- 2015 - Master Artistic Research Den Haag,  
2017 Koninklijke Academie van Beeldende  
Kunsten diploma
- 2010 - Master in Photography and dynamic Image  
2012 Bucharest National University of Arts  
diploma
- 2000 - Bachelor Fine Art Bucharest National  
2004 University of Arts

### EXHIBITIONS

- 2017 Nest, Den Haag Everything must go  
[Group](#)
- 2017 Estonian Museum of Applied Arts and  
Design in Tallinn Ajavahe 7-th Tallin  
Applied Art Triennial  
[Group](#)
- 2017 1646, Den Haag The ongoing  
conversation 4  
[Group](#)
- 2016 Locatie Z, Den Haag An infinite game of  
chance  
[Group](#)
- 2015 Anca Poterasu Gallery Bucharest What  
About Poor Gregor Samsa ...  
[Group](#)
- 2015 The Space, Bucharest Bucharest Art  
Safari  
[Group](#)
- 2015 CAV Multimedia Center, Bucharest

### PROJECTS

- 2012 Platforma Space National Museum  
Contemporary Art Bucharest art project  
space

Concrete paradise  
Duo

2014 National Museum of Contemporary Art  
Bucharest What about y[our] memory  
Group

2012 Bile Brehy festival of performance,  
Prague Bile Brehy  
Group

2011 Anexa, National Museum of  
Contemporary Art, Bucharest EEA  
/Norway Grants/Snapshots:  
Retrospection and Oppertunities  
Group

## INTERNATIONAL EXCHANGES/RESIDENCIES

2013 Sculpture Symposium Moinesti  
Romania

2012 Krems Air Austria

2008 “Centu Rays” symposium Tumkur India

## PUBLICATIONS

2017 Relay Koninklijke Academie Beeldende  
Kunst, Den Haag krant

## COMMISSIONS

2008 Municipality of Bacau Romania Public  
Waterfountain Design finished

## SECONDARY ART-RELATED ACTIVITIES

2017 - -- Artist talk, Tallin Art Triennial Ajave

2015 - Metalworkshop assistant, KABK Den Haag  
2017



How I added Value to my Work, 2017  
instalation, 80/80/80



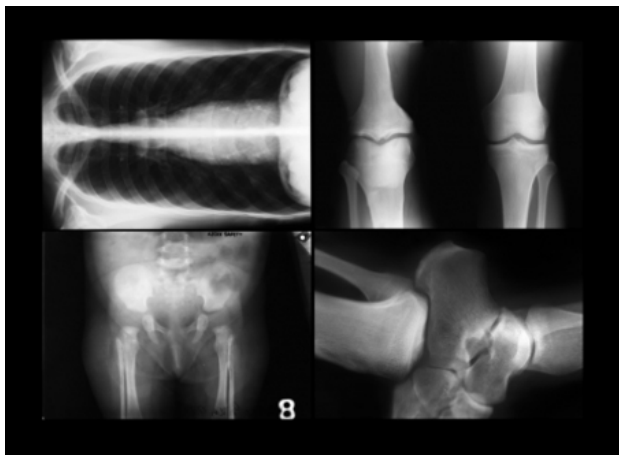
Latent Noise, 2017  
musical instruments carpentry



Gorgeous Life , 2016  
inkjet print, wood and aluminum casing, 50/70/12



hghknt, 2016  
wood inlay, video, 120/40



Index, 2015  
lambda print, photography, 100/70, 60/40



Useless Water Fountain, 2014  
salt carving , 40/40/80



Concrete Paradise, 2014  
installation, 300/200/150



In The Absence , 2013  
 lambda print, gelatin silver print , 60/40



Temple, 2012  
 inkjet print, photography, 450/450



Rulers, 2012  
 plaster models, inkjet print , 50/70