

Some information on this page is only available in Dutch

## IEBELE ABEL

Divination assumes that reality consists of multiple levels (like the divine and the physical world), which in some manner mirror one other. Within this mode of thought, levels of reality outside the scope of the physical world can be captured by human mind because of their reflection in physical phenomena. This idea of correspondence is extremely widespread in all societies, from early history till recent times. Divinatory methods are typically used in situations in which morality, justice or health are central. Though divination is widely practiced in Western society, within the framework of contemporary science there is hardly theory supporting the idea of correspondence. Within the present time-space-causality mode of thought, correspondence between the human psyche and physical systems outside the body are considered as anomalous phenomena. Scientific research however indicates that anomalous correspondence takes place in controlled experimental settings. Evidence for correspondence between human psyche and the physical world, reiterate metaphysical contemplations on God, world and soul. The Dutch artist and researcher Iebele Abel has developed a divinatory musical system to investigate if and how anomalous correspondence can be applied to evoke exceptional (psychic) experiences. This visual and musical system is based on methods and technologies within the framework of contemporary scientific and artistic thought, and may therefore contribute in our understanding how and if human mind can capture, interpret and express information from different levels of reality, if any. Iebele Abel is an artist and PhD researcher at the Institute of Philosophy, Leiden University. He works and lives in The Hague (Netherlands) and Patmos (Greece).

### WEBSITES

[www.iebele.nl](http://www.iebele.nl)

### MEMBER OF A PROFESSIONAL ASSOCIATION/ARTISTS' ASSOCIATION

Pulchri

### EDUCATION

1993 video-film Academie voor Beeldende Vorming, Tilburg diploma

### EXHIBITIONS

2009 Pulchri Studio Nature and the Law of Consciousness  
[Solo](#)

2008 Pulchri Studio Mind over Matter, de eerste beelden uit de serie  
[Solo](#)

2005 Studio Lissabon Beeldend werk 1992-

### INTERNATIONAL EXCHANGES/RESIDENCIES

2011 Patmos, Griekenland

2009 International Consciousness Research Laboratories, Princeton, USA

- 2001  
Solo
- 2004 Het Bewustzijn van een Park  
Geluidperformance in park  
Ockenburgh  
Solo
- 2002 Licht und Schatten Deutsches  
Architektur Museum Frankfurt  
Group
- 2002 Digital Exposure 3 Vrije Akademie Den  
Haag  
Group
- 2001 Digital Exposure 2 Vrije Akademie Den  
Haag  
Group

## COMMISSIONS

- 2006 Ministerie van Binnenlandse Zaken Den  
Haag Ontwerp kunstwerk binnenruimte  
NCC
- 2003 Centraal plan buro, Den Haag Den Haag  
schetsopdracht
- 2003 Dienst Stedelijke Ontwikkeling Den  
Haag Ontwerp verlichtingsplan Lange  
Voorhout

## PUBLICATIONS

- 2010 Talks about Mind over Matter, full-color  
American Edition Elmtree&Waters  
Publishers Boek, 148 pagina's, gebonden,  
full color
- 2009 Talks about Mind over Matter  
Elmtree&Waters Publishers Boek, 160  
pagina's, gebonden, full color
- 2008 Mind over Matter, paranormale  
verkenningen in kunst en wetenschap  
Pulchri Studio Artikel over recent werk van  
lebele Abel
- 2008 The first works in the series Mind over  
Matter Elmtree&Waters Publishers Boek, 20  
pagina's, gebonden, full color
- 2007 De Universele Wetten van Kosmisch  
Bewustzijn Public media, Den Haag - ISBN  
978-90-808940-2-0 Boek, 128 pagina's,  
genaaid, gebonden
- 2006 13 Moon Music Public media, Den Haag -  
ISBN 978-90-808940-2-0 Meditatieve  
seriële muziek
- 2004 Body in Resonance Public media, Den Haag  
- ISBN 978-90-808940-2-0  
Ontspanningsmuziek
- 2002 Licht und Schatten Deutsches Architektur  
Museum, Frankfurt

## SECONDARY ART-RELATED ACTIVITIES

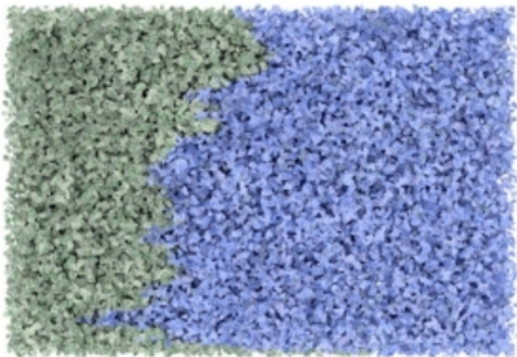
2010 - PhD researcher, Institute of Philosophy,  
2014 Leiden University

2004 - Voorzitter bestuur stichting  
2005 Stralingbewust

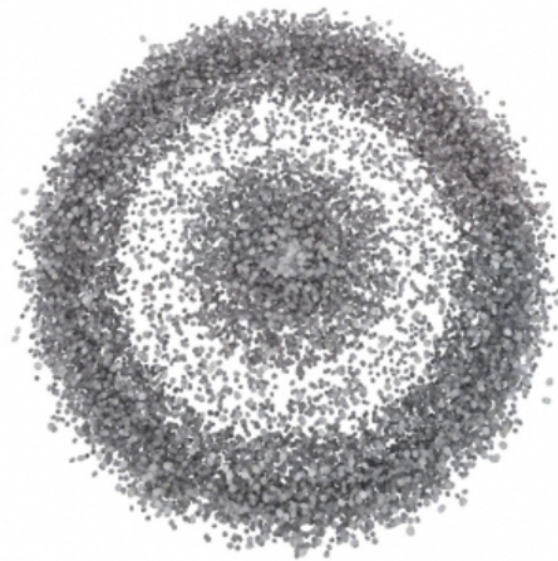
2004 - Eigenaar uitgeverij Public Media Den  
2008 Haag

2002 - Vrije Akademie, Den Haag  
2005

2000 - Voorzitter stichting Filmstad, Den Haag  
2004



A strong focus on blue at the right, 2008  
photographic print on dibont, framed, 112x112



Deviation from a standard distribution, 2008  
photographic print on dibont, framed, 112x112



Vallende bladeren (Bougainville), 2008  
photographic print on dibont, framed, 112x112



13 Moon Music, 2006  
Audio cd + boekje, nvt



Consciousness Matter, 2006  
Ilfochrome op glas, 11000x2000



Het bewustzijn van een park, 2004  
Geluidsperformance/installatie, 40000x20000



langste dag in de studio, 1999  
cgi, 90x90x110



Equator #35, 1998  
fotografie, 40x45